



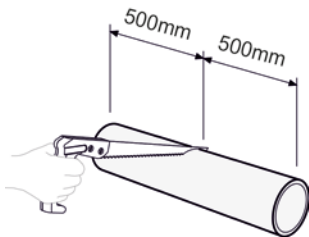
RPI-S Insulation sleeve

APPLICATION MANUAL

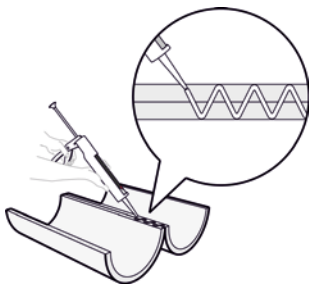
Situation A

The RPI-S Insulation sleeve is fitted round a pipe that passes through a round hole in the wall, leaving a gap between the pipe and the wall of less than 10 mm.

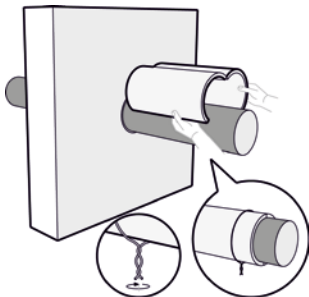
NB: With plastic pipes, we recommend using the RPI-P Fire collar or the RPI-P Fire sleeve.



1. Choose the correct RPI-S Insulation sleeve for the pipe diameter and saw it into two 500 mm pieces.



2. Apply RPA-S Adhesive in an even zigzag pattern about 5 mm in diameter on both side edges of one of the parts of the RPI-S Insulation sleeve.

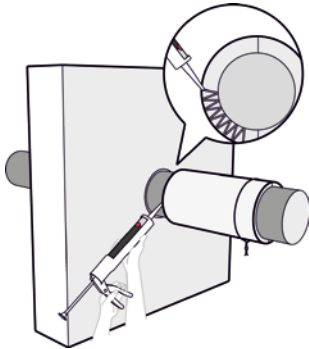


3. Attach the RPI-S Insulation sleeve round the pipe and fasten it with at least two steel ties.

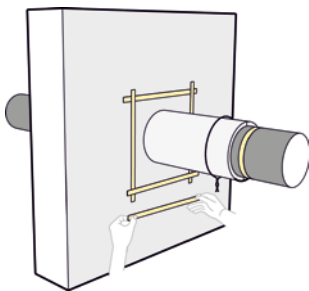


RPI-S Insulation sleeve

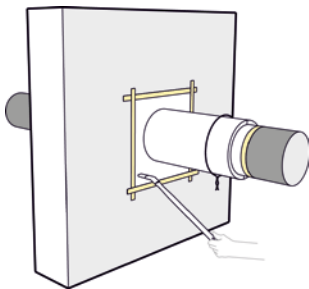
APPLICATION MANUAL



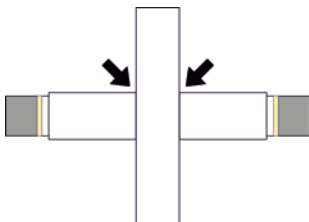
4. Apply RPA-S Adhesive in an even zigzag pattern about 5 mm in diameter on the end side of the RPI-S Insulation sleeve.



5. Push the RPI-S Insulation sleeve up against the wall and apply masking tape to the pipe and the wall over a distance of about 30 mm from the RPI-S Insulation sleeve.



6. Paint the entire seal with RPI-S Coating.



7. Perform steps 2 to 6 on both sides of the wall.

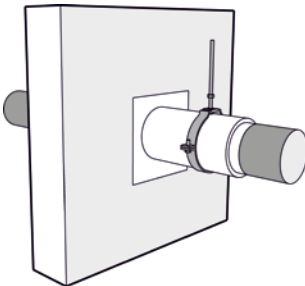
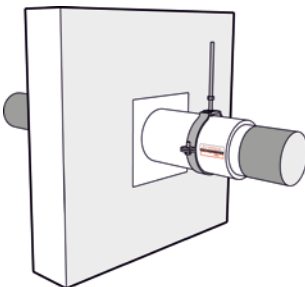


RPI-S Insulation sleeve

APPLICATION MANUAL



8. Fill in the RPI-S Sealing sticker and display it in a clearly visible place.



9. Make sure that the RPI-S Insulation sleeve is suspended firmly with a suitable steel bracket within 25 cm of the recess.



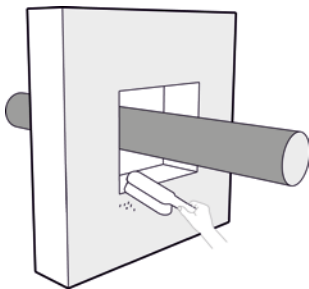
RPI-S Insulation sleeve

APPLICATION MANUAL

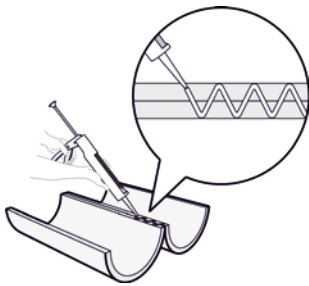
Situation B

The RPI-S Insulation sleeve is fitted round a pipe that passes through any hole in the wall.

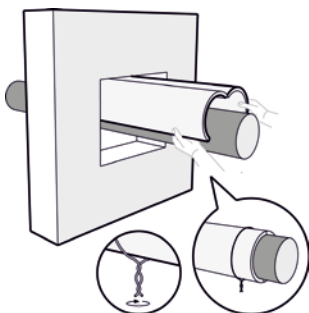
NB: With plastic pipes, we recommend using the RPI-P Fire collar or the RPI-P Fire sleeve.



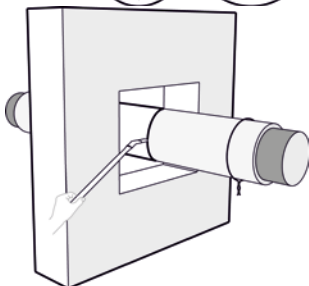
1. To ensure good adhesion of the masking tape and the RPI-S Coating, make sure the working surfaces are clean and dust-free.
Choose the correct RPI-S Insulation sleeve for the pipe diameter.



2. Apply RPA-S Adhesive in an even zigzag pattern about 5 mm in diameter on both side edges of one of the parts of the RPI-S Insulation sleeve.



3. Attach the RPI-S Insulation sleeve round the pipe and fasten it with at least two steel ties.

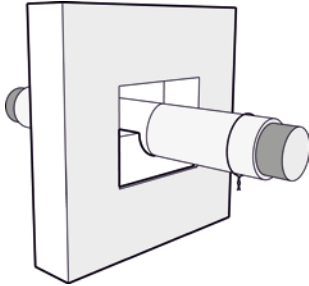


4. Insert the RPI-S Insulation sleeve through the wall and paint the recess and the RPI-S Insulation sleeve with RPI-S Coating at the site where the RPI-S Board is to be affixed, over a width of about 60 mm.

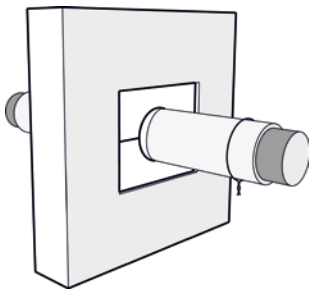


RPI-S Insulation sleeve

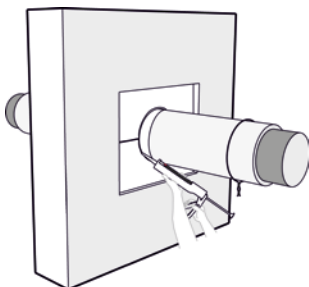
APPLICATION MANUAL



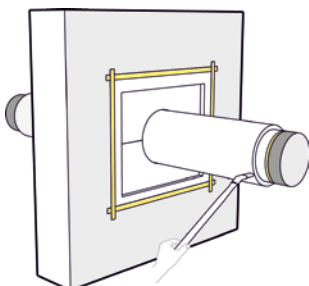
5. Saw the fitting pieces out of the RPI-S Board to the appropriate size, ensuring that they fit tightly in the recess. Paint the side edges of the recess and the fitting pieces thoroughly with RPI-S Coating so that the fitting pieces are 'glued' firmly to the recess and the RPI-S Insulation sleeve.



6. Make the fitting pieces as large as possible to limit the number of joints. Cut enough fitting pieces to seal the whole recess. Make sure the relief on all pieces of RPI-S Board is facing the same way up.



7. Seal any gaps or joints between the fitting pieces and the RPI-S Insulation sleeve and between the fitting pieces and the recess with RPI-S Filler.

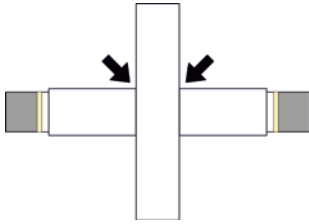


8. Apply masking tape to the wall and the pipe over a distance of about 30 mm from the RPI-S Insulation sleeve and paint the whole seal with RPI-S Coating.

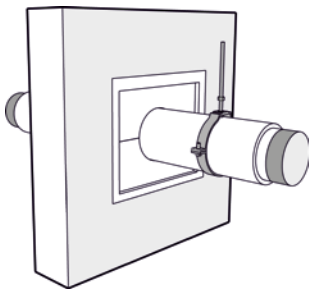


RPI-S Insulation sleeve

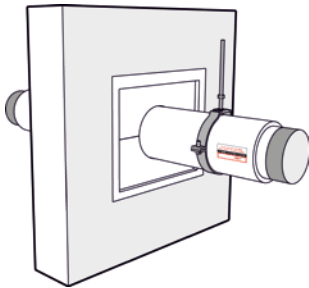
APPLICATION MANUAL



9. Perform steps 8 and 9 on both sides of the wall.



10. Make sure that the RPI-S Insulation sleeve is suspended firmly with a suitable steel bracket within 25 cm of the recess.



11. Fill in the RPI-S Sealing sticker and display it in a clearly visible place.