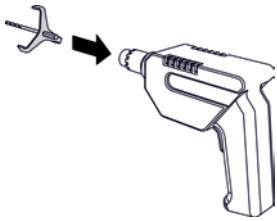


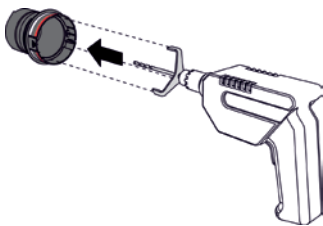


RPI-E Flex tube

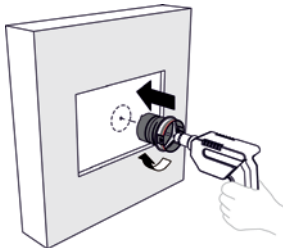
APPLICATION MANUAL



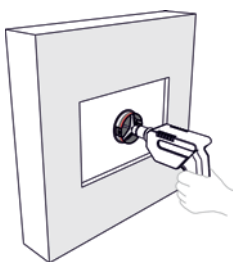
Set the electric drill to the screwdriver setting. Attach the adapter to the electric drill.



Attach the adapter to the saw.



Set the drill in the right direction and place the saw up against the (mineral wool) board.

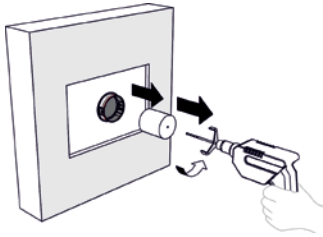


Slowly drill a hole through the (mineral wool) board.

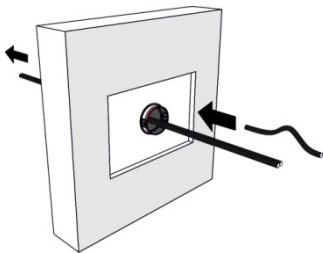


RPI-E Flex tube

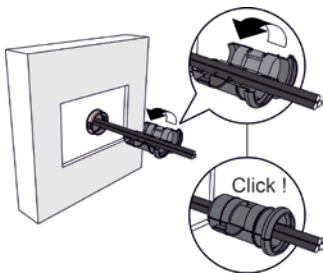
APPLICATION MANUAL



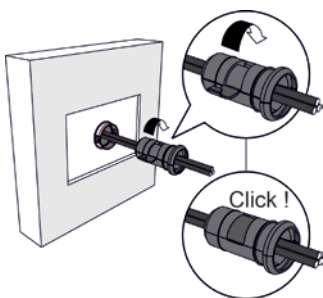
Remove the saw cylinder (from the board).



Lay the cables through the saw piece.



Open the core of the RPI-E Flex tube.
Place the core around the cables.

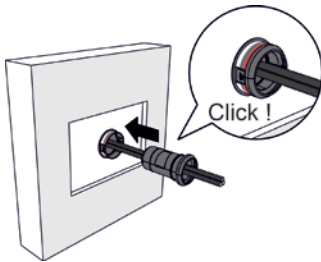


Close the core.

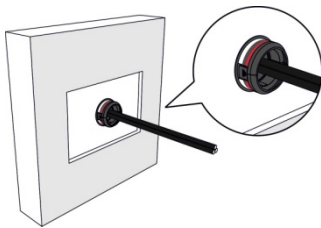


RPI-E Flex tube

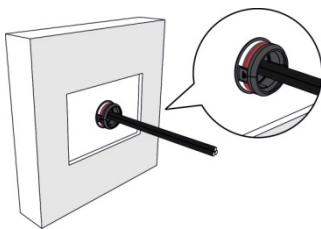
APPLICATION MANUAL



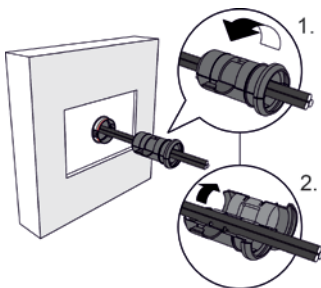
Fit the core into the saw piece.



Your seal is now complete.



Mutation.
Click on the saw piece and remove the core.

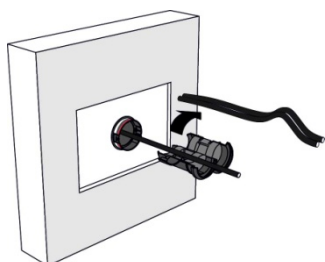


Open the core.



RPI-E Flex tube

APPLICATION MANUAL



Remove old and/or lay new cables in place.
Repeat the steps from 7 on.



Fill in the working data on the RPI-S Seal sticker and attach it in clear sight.