



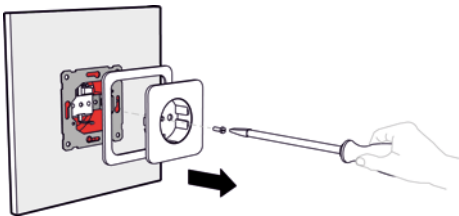
RPI-E Connection box stop ○

APPLICATION MANUAL

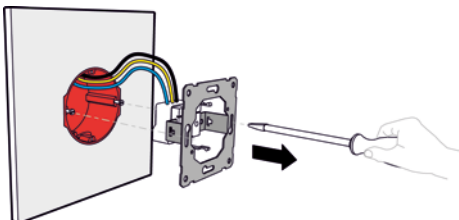
The RPI-E Connection box stop ○ is easy to fit in a wall socket.



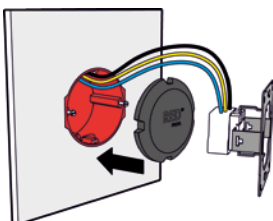
Check that the wall socket is mounted correctly and in a fire-resistant structure. Check that the wiring is disconnected from the mains.



Check that the wall socket is mounted correctly and in a fire-resistant structure. Check that the wiring is disconnected from the mains.



Remove the cover of the wall socket or the switching equipment.
Remove any mechanism from the wall socket. Remove any wiring and items such as wire connectors.

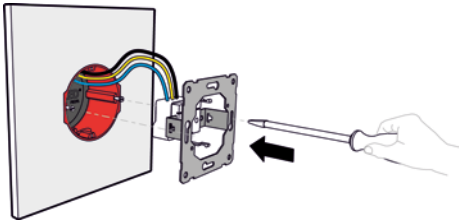


Insert the RPI-E Connection box stop ○ against the back of the wall socket.

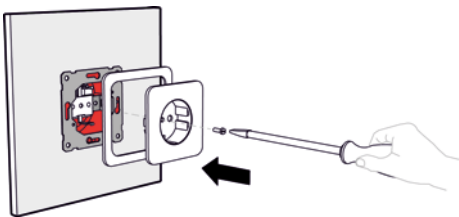


RPI-E Connection box stop ○

APPLICATION MANUAL



Connect the wiring.



Replace the cover.